



APPENDIX Q
Utilities



Q.1

Utilities Engineering Report



Inglewood Transit Connector Project

Utilities Engineering Report

August 20, 2021



City of Inglewood
One Manchester Boulevard
Inglewood, CA 90301

Table of Contents

- 1. Introduction 3
 - 1.1 Project Overview 3
 - 1.2 Purpose 3
 - 1.3 Ongoing Work 3
- 2. Utility Owners 4
 - 2.1 Contact Information 4
 - 2.2 Southern California Edison 4
 - 2.3 City of Inglewood 4
 - 2.4 West Basin Municipal Water District 5
 - 2.5 Southern California Gas Company 5
 - 2.6 AT&T 5
 - 2.7 LA County Flood District (LACFD) 5
 - 2.8 LA County Sanitation District 5 (LACSD-5) 5
 - 2.9 Los Angeles Department of Water and Power (LADWP) - Water 5
 - 2.10 Unknown Owners 6
- 3. Existing Conflict Conditions 6
 - 3.1 Electrical 6
 - 3.2 Storm Drains 7
 - 3.3 Sanitary Sewer 7
 - 3.4 Water 7
 - 3.5 Gas 8
 - 3.6 Telecommunications 8
 - 3.7 Utility Conflict Matrix 8

Appendix

- A. Utility Conflict Matrix Shortlist A1
- B. Utility Conflict Inventory B1
- C. Miscellaneous Notes C1

1. INTRODUCTION

1.1 Project Overview

In response to a community study conducted in 2018, the City of Inglewood (COI) began developing plans for a transit line connecting the new Metro Rail Crenshaw Line Downtown Inglewood Station to the major commercial and entertainment districts in the city. The Inglewood Transit Connector (ITC Project) has an estimated length of 1.6 miles that begins at the Market Street Station in downtown Inglewood. To best accommodate priority populations, the ITC is projected to have stations at The Forum and at SoFi Stadium. Current plans also include the addition of a mid-route maintenance storage facility. The ITC is projected to open in 2026 and aims to connect local communities, reduce traffic congestion and greenhouse gas emissions, and create a safe, convenient, and environmentally sustainable way to transport people through the city.

The Environmental Impact Report (EIR) draft was released in December 2020 and the final report is expected to be released in summer 2021. The ITC Project has so far been designed as an elevated automated people mover that will be supported by columns and straddle bents along Market St, Manchester Ave, and Prairie Ave.

1.2 Purpose

The purpose of this report is to provide an overview of existing utilities in the corridor, including those which may conflict with the proposed work and have a cost impact on the project. The types of utilities identified include electric, gas, telecommunications, water, sewer, and storm drain. This report emphasizes utility owners anticipated to have existing infrastructure within the project corridor.

1.3 Ongoing Work

As of August 2021, there are still a handful of utilities, including a few storm drains, which require more extensive verification due to conflicting information in as-builts and the project base-map. As further information is uncovered, relevant details in this report will be updated accordingly. Furthermore, as third-party agreements are developed with utility owners, specific choices and constraints regarding utility redesign will be incorporated into this report. Additionally, this report shall be accompanied by a set of plans which will provide visualization of existing utilities and planned new and redesigned utility services.

2. UTILITY OWNERS

Owners of any utilities within the project scope which represent clear or anticipated conflicts are further detailed in the below subsections 2.2-2.10.

2.1 Contact Information

| Table 1. Owners of Utilities within ITC Footprint | | | | |
|---|-------------------------------------|--------------------|--|--|
| Utility | Owner | Contact | Phone | Email |
| Electric | Southern California Edison | Kim Gurule | (714) 796-9932 | kimberlie.gurule@sce.com |
| Gas | Southern California Gas Co. | Jason Sum | (310) 687-2011 | socalgastransmissionutilityrequest@semprautilities.com |
| Storm Drain | City of Inglewood | TBD | | |
| | LA County Flood District | TBD | | |
| Sewer | City of Inglewood | TBD | | |
| | LA County Sanitation District 5 | Robert C. Ferrante | (562) 699-7411 | |
| | | Esther Kang | | engineeringcounter@lacsdsd.org |
| Telecom. | AT&T | Josh Casper | (310) 515-4029 | cr2936@att.com |
| Water | City of Inglewood | TBD | | |
| | West Basin Municipal Water District | Frank Fuchs | | frankf@westbasin.org |
| | | Jinho Kang | | jinhok@westbasin.org |
| | LADWP, Water | Martin Lam | | martin.lam@ladwp.com |
| Daryll Chenoweth | | (626) 458-3109 | dchenowe@dpw.lacounty.gov | |

2.2 Southern California Edison

Southern California Edison (SCE) is the primary electricity supplier for Los Angeles County. SCE provides 14 million people with electricity across a service territory of approximately 50,000 square miles in Southern California. SCE owns and maintains three relevant infrastructure networks in Southern California: overhead lines, underground lines, and streetlights. The street lighting facilities within the project area include but are not limited to Prairie Ave, Manchester Blvd, Market St, and Regent St.

2.3 City of Inglewood

The City of Inglewood provided as-built information on water lines, sewer lines and storm drain lines. Relevant COI facilities in the project footprint include E-W water lines along Manchester Blvd, E Spruce Ave, E Nutwood St, Kelso St/Pincay Dr, E Arbor Vitae St (3x), and E Hardy St. There are N-S water lines along N Locust Ave, Manchester Blvd, and S Prairie Ave. E-W sewers run along Manchester Blvd, E Spruce Ave, and Manchester Dr. COI Sewers run N-S along N Hillcrest

Blvd, Manchester Blvd, between Manchester Terrace and Manchester Dr, and S Prairie Ave south of Arbor Vitae St. There are no COI storm drain facilities within the project footprint.

2.4 West Basin Municipal Water District

The West Basin Municipal (WBM) Water District provided as-builts of water lines within the project scope. There are 4 separate WBM water lines running N-S along S Prairie Blvd and one E-W along E Hardy St.

2.5 Southern California Gas Company

The Southern California Gas (SoCalGas) Company provides natural gas service for approximately 21.8 million customers, spanning roughly 24,000 square miles of California, and is the nation's largest natural gas distribution utility. Some major facilities within the project footprint include N-S lines along Fir Ave, La Brea Ave, Locust Ave, and Prairie Ave, and E-W along Regent St, Manchester Ave, Arbor Vitae, and Hardy St.

2.6 AT&T

AT&T owns and maintains telecommunications infrastructure throughout the project area. Telecom lines within the footprint include multiple N-S lines along La Brea Ave, Locust St, and the southern end of Prairie Ave. There are additional major E-W lines along Florence Ave, Regent St, and Manchester Ave.

2.7 LA County Flood District (LACFD)

The Los Angeles County Flood District is responsible for the maintenance and construction of flood protection, water conservation, and aesthetic/recreational water facilities throughout 2,700 square miles of LA County. Within the project scope, there are facilities along Manchester Ave and Prairie Ave.

2.8 LA County Sanitation District 5 (LACSD-5)

LACSD District 5 covers the western coastal and inland area of LA County bordered by Slauson Ave in the north, I-110 to the east, Manhattan/Hermosa/Redondo State Beach areas to the west, and Long Beach to the south. Within the project footprint, there are major LACSD-5 sewers running N-S along Prairie Ave and Manchester Blvd (also E-W). There are some minor sewers running E-W along Spruce Ave, Arbor Vitae St, and Kelso St.

2.9 Los Angeles Department of Water and Power (LADWP) - Water

The LADWP Water department operates myriad facilities throughout the County of Los Angeles and beyond, including underground water lines. Within the ITC footprint, there is only an underground water main line running N-S along the entire length of S Prairie Ave.

2.10 Unknown Owners

There are several utilities which do not yet have identified owners, some of which are in direct conflict with the ITC columns. These utilities include several water/irrigation lines (some of which may be independently operated by private entities such as Vons), street lighting/signaling lines, two sewer lines, electric lines, and one stretch of telecommunication line. As more information is uncovered, these utilities will be incorporated into the appropriate sections.

3. EXISTING CONFLICT CONDITIONS

All utilities within the project footprint have been marked as either Remove (R), Protect in Place (PIP), Support in Place (SIP), Remove & Relocate (R&R), or Protect in Place/Replace as Necessary (PIP/R) depending on their proximity to project structures and status as in-use or abandoned.

3.1 Electrical

Electrical utility conflicts which are likely to have a cost impact include a combination of streetlights (SL), Edison underground lines (SCE-UG), and Edison overhead lines (SCE-OH). Until further discussion is conducted regarding the plan of action for streetlights within the project footprint, all streetlight electrical facilities identified will continue to be maintained in the Utility Conflict Inventory matrix (Appendix A, Table A).

Any identified overhead lines within the project footprint that pass under the guideway are marked as R&R. Redesign of these utilities may involve mounting to the underside of the guideway, elevation, or accommodation in another way depending on the utility owners' standards and specifications. SL and SCE-UG utilities are marked as PIP unless they specifically conflict with proposed columns and are outlined in the paragraphs below. Additionally, if any underground electrical utility is in close proximity to a proposed guideway column, it is marked PIP/R and will be designated/designed to accommodate the column's chosen foundation dimensions.

There are SL column conflicts at the intersection of Market St and Regent St, at the northeast corner of Market St and Manchester Blvd and along the north and south sides of Manchester Blvd from N Locust St to N Hillcrest Blvd. Along Manchester Blvd from N Hillcrest Blvd to S Prairie Ave, SL lines conflict with nearly all S/W-side and some N/E-side straddle-bent columns. A SL line runs directly through the proposed station on the SW corner of Manchester Blvd and S Prairie Ave. At the intersections of Kelso St, Touchdown, and Arbor Vitae St, with S Prairie Ave, SL lines conflict with at least one proposed column.

There is a project column impacted by SCE-UG conflict at the intersection of N Hillcrest Blvd and Manchester Blvd. There are SCE-UG lines that affect all four proposed columns in the corners of the intersection. Along the west side of S Prairie Ave beginning at Manchester Blvd, an SCE-UG line affects the station and every proposed column until Arbor Vitae St. Along Prairie Ave from Arbor Vitae St to Hardy St, there are SCE-UG lines which either directly impact, or are very close to, almost every proposed column.

There is a SCE-OH line running E-W across the Kelso St-S Prairie Ave intersection which may conflict with the proposed guideway depending on height. There are no other SCE-OH lines within close proximity of proposed stations or guideway.

3.2 Storm Drains

At this time there are no storm drain lines that are identified to have a potential cost impact on the project. Further information has been requested regarding possible storm drain conflicts along Market St.

3.3 Sanitary Sewer

There is an unknown sewer line running N-S across Manchester Blvd between the intersections of Market St and Locust St that is in close proximity to a proposed column. The line connects to a City of Inglewood sewer which runs E-W along Manchester Blvd and is in close proximity to 5 proposed columns. There is a 12" LACSD-5 sewer line which runs N-S along Prairie Ave and is very close proximity to several proposed columns from Manchester Blvd to Kelso St. These three sewer lines are marked as PIP/R and will be further designated/designed depending on the columns' chosen foundation dimensions. South of Arbor Vitae St, along the western sidewalk of Prairie Ave, there is a City of Inglewood 8" sewer line that affects every proposed column until Victory St. This line will need to be relocated to accommodate the future column foundations.

3.4 Water

Along on N Market St and North of E Regent St, there is an unknown water line that conflicts with a proposed column. Between Regent St and Queen St along Market St, there is an unknown water line that conflicts with a proposed column. South of Queen St and along Market St, there are 3 water lines that will create a cost impact as they are all affected by a proposed column. Along Manchester Ave between Market St and Locust St, there is an unknown water line which will have a cost impact as it conflicts with a proposed column. On Manchester Blvd, south of Manchester Dr, there are two water line laterals which conflict with a guideway column. Along Prairie Ave there is an 8" COI water line which conflicts with, or is in very close proximity to, every proposed column from Victory St to Hardy St. Except for the 8" line on Prairie Ave, all water line conflicts appear to be service connections. All water line conflicts have been

designated R&R and will be designed to accommodate future column foundation dimensions in accordance with the respective utility owner design specifications.

3.5 Gas

Along Manchester Ave between Market St and Locust St, there is a 3" gas line running N-S that conflicts with one proposed column. On the southern side of Manchester Ave, just south of Spruce St, there is a 2" gas line which conflicts with one proposed column and is in closer proximity to several others leading east to Prairie Ave. South of Kelso St there is an 8" gas line on the west side of Prairie Ave which affects every proposed column up until Victory St. South of Victory St and west of Prairie Ave, there is a gas line of unknown dimension which affects one proposed column on each straddle bent to the end of the line. All gas lines described here will need to be relocated (R&R) and will require coordination with SoCalGas as the proposed guideway column foundation dimensions are specified.

3.6 Telecommunications

At the northeast corner of Manchester Blvd and Market St, there is an AT&T telecommunications line that conflicts with a proposed column. The duct bank also likely conflicts with the northern column of the next straddle bent to the east. This line is marked R&R will require coordination with AT&T as the column foundation is selected. There is an unknown telecommunications line on the west side of Prairie Ave from La Palma Dr to Buckthorn St that likely conflicts with four columns. Additional research on this duct bank is necessary as it is not clear where it comes from and goes to at the limits depicted in the survey. Assuming that the line is as mapped, it is marked PIP/R and will be further designated when column foundation is selected, and the true proximity is understood. This utility will also need to be further identified so that appropriate coordination with the owner may be executed.

3.7 Utility Conflict Matrix

Refer to Appendices A and B for the utility conflict matrix (Table A) and a full working inventory of all existing utilities within the project footprint (Table B).

Appendix

A. UTILITY CONFLICT MATRIX SHORTLIST

| <p align="center">Table A. Inglewood Transit Connector (ITC) Utility Conflict Matrix - Shortlist Updated: 11 August 2021</p> | | | | | | | | | | | | |
|--|-----------------------|--|---------|---------------------|----------------------|--------------------|----------------|--|---------|--|-----------------------|---|
| <p>Color Legend: RED: Items which were previously mapped but have since been removed BLUE: Utilities with ownership or sizing changes across versions</p> | | | | | | | | <p><i>N to S based on track stationing</i></p> | | <p>Disposition Legend: Remove (R), Protect in Place (PIP), Support in Place (SIP), Remove & Relocate (R&R), Protect in Place/Replace as Necessary (PIP/R)</p> | | |
| No. | Location ¹ | Intersection | Orient. | Direc. ² | Description | Depth ³ | Station Limits | | Owner | Dispos. | Conflict ⁴ | Comments |
| 1 | W/N | N LOCUST ST / W FLORENCE ST | E/W | PERP | 2" GAS LINE | UNK | 00+00 | 00+00 | SCG | R&R | YES | XING STATION CONN. TO CRENSHAW LINE |
| 2 | W/S | N LOCUST ST / W FLORENCE ST | E/W | PERP | (2X) ELECTRIC SIGNAL | TBD | 00+00 | 02+00 | TBD | R&R | YES | XING N EDGE OF STATION @ MARKET ST |
| 4 | N | S MARKET ST / E REGENT ST | E/W | PERP | WATER LINE | 4.2 | 06+50 | - | UNK | R&R | YES | |
| 19 | S | S MARKET ST / E REGENT ST | E/W | PERP | WATER LINE | TBD | 11+00 | - | UNK | R&R | YES | |
| 24 | S | S MARKET ST / E REGENT ST | E/W | PERP | WATER LINE | TBD | 13+20 | - | TBD | R&R | YES | |
| 30 | S | S MARKET ST / E QUEEN ST | E/W | PERP | 2X WATER LATERAL | TBD | 14+50 | 14+55 | TBD | R&R | YES | BOTH XING COLUMN |
| 34 | AT | S MARKET ST / W MANCHESTER BLVD | E/W-N/S | PARLL/PERP | ELECTRIC SIGNAL LINE | TBD | 17+65 | 19+00 | TBD | R&R | YES | CONFLICTS W/ SADDLE-BENT @ NE CORNER OF INT. |
| 35 | AT | S MARKET ST / W MANCHESTER BLVD | E/W | PARLL/PERP | UG TELECOM | TBD | 18+00 | 28+00 | AT&T | R&R | YES | CONFLICTS W/ SADDLE-BENT @ STA. 18+00, STA. 19+00 |
| 36a | AT | S MARKET ST / W MANCHESTER BLVD | E/W | PARLL | ELECTRIC SIGNAL LINE | TBD | 18+00 | 26+88 | TBD | R&R | YES | CONFLICTS W/ SADDLE-BENT @ NE CORNER OF INT., RUNS ALONG N EDGE OF MANCHESTER BLVD |
| 49 | W | N LOCUST ST / W MAN. BLVD | N/S | PERP | UG TELECOM | UNK | 20+12 | - | VRZN | R&R | YES | |
| 50 | W | N LOCUST ST / W MAN. BLVD | N/S | PERP | UG TELECOM | UNK | 20+13 | - | CC | R&R | YES | |
| 51 | W | N LOCUST ST / W MAN. BLVD | N/S | PERP | UG TELECOM | UNK | 20+13 | - | SPECT | R&R | YES | |
| 56 | W | N LOCUST ST / W MAN. BLVD | N/S | PERP | WATER LATERAL | TBD | 20+91 | - | UNK/COI | R&R | YES | |
| 70 | AT | N LOCUST ST / W MAN. BLVD | | PERP | WATER LINE | TBD | 25+01 | - | COI | R&R | YES | XING INT. FROM N TO S (XING MAIN LINE) |
| 36b | AT | S MARKET ST / W MANCHESTER BLVD | E/W | PARLL | ELECTRIC SIGNAL LINE | TBD | 18+00 | 26+88 | TBD | R&R | YES | CONTD, CONFLICTS WITH SADDLE BENT @ N EDGE OF W MAN. BLVD ~ STA. 25+00 |
| 71 | AT | N HILLCREST BLVD / W MANCHESTER BLVD | N/S-E/W | PARLL/PERP | ELECTRIC LINE | TBD | 26+33 | 27+87 | SCE | R&R | YES | ALL 4 SIDES OF INT., CONFLICT @ NW CORNER SADDLE BENT |
| 75 | E | N HILLCREST BLVD / W MANCHESTER BLVD | N/S | PARLL | ELECTRIC SIGNAL LINE | TBD | 27+87 | 32+00 | TBD | R&R | YES | CONFLICTS W/ 4 COLUMNS ALONG S/W EDGE OF W MAN. BLVD |
| 76 | E | N HILLCREST BLVD / W MANCHESTER BLVD | N/S-E/W | PARLL/PERP | ELECTRIC SIGNAL LINE | TBD | 27+90 | 29+00 | TBD | R&R | YES | CONFLICTS WITH SADDLE BENT @ N EDGE OF W MAN. BLVD, CONT. ALONG MANCHESTER TERRACE |
| 80 | E | MANCHESTER TERRACE / W MANCHESTER BLVD | N/S | PARLL | ELECTRIC SIGNAL LINE | TBD | 29+02 | 33+20 | TBD | R&R | YES | XING. COLUMN @ NW CORNER OF MAN. DRIVE / W MAN. BLVD INT. |
| 89 | E | E SPRUVE AVE / W MAN. BLVD | N/S | PARLL | ELECTRIC SIGNAL LINE | TBD | 32+80 | 36+78 | TBD | R&R | YES | INT. 2 COLUMNS ALONG S EDGE OF W MAN. BLVD |
| 90 | E | E SPRUVE AVE / W MAN. BLVD | E/W | PERP | 2X WATER LATERAL | TBD | 33+00 | 33+27 | TBD | R&R | YES | 1ST INT. COLUMN ALONG S EDGE OF W MAN. BLVD |
| 92 | AT/E | MANCHESTER DR / W MAN. BLVD | N/S-E/W | PARLL/PERP | 2" GAS LINE | UNK | 33+46 | 42+42 | UNK | R&R | YES | RUNS E ALONG MAN. DR., XING INT & CONT. ALONG SW EDGE OF W MAN. BLVD (CONFLICTS 6 COLUMNS). PREV. MARKED AS SCG |
| 97 | E | MANCHESTER DR / W MAN. BLVD | E/W | PERP | 2X WATER LATERALS | TBD | 35+81 | 35+88 | TBD | R&R | YES | |
| 99 | W | E TAMARACK AVE / W MAN. BLVD | N/S | PARLL | ELECTRIC SIGNAL LINE | TBD | 36+68 | 39+50 | TBD | R&R | YES | CONFLICTS 3 COLUMNS ALONG NE EDGE OF MAN. BLVD |
| 102 | E | E TAMARACK AVE / W MAN. BLVD | E/W | PARLL | ELECTRIC SIGNAL LINE | TBD | 37+51 | 39+55 | TBD | R&R | YES | CONFLICTS ALL 3 COLUMNS ALONG S-C/L OF W MAN. BLVD |
| 108 | E | S OSAGE / W MACHESTER BLVD | E/W | PARLL | ELECTRIC SIGNAL LINE | TBD | 40+41 | 44+00 | TBD | R&R | YES | CONFLICTS ALL 2 COLUMNS ALONG S EDGE OF W MAN. BLVD |
| 109 | E | S OSAGE / W MACHESTER BLVD | N/S | PERP | WATER LATERAL | TBD | 41+63 | - | TBD | R&R | YES | |

| No. | Location ¹ | Intersection | Orient. | Direc. ² | Description | Depth ³ | Station Limits | Owner | Dispos. | Conflict ⁴ | Comments |
|--|-----------------------|--------------------------------|---------|---------------------|----------------------|--------------------|----------------|---------|---------|-----------------------|---|
| TO ACCOMMODATE LONG N/S UTILITY RUNS, SOUTH OF W MANCHESTER BLVD / S PRAIRIE AVE INTERSECTION, UTILITIES ARE LISTED IN ORDER OF CONFLICT FROM NORTH TO SOUTH AND EAST TO WEST DESPITE TRUE UTILITY RUN STATIONING. | | | | | | | | | | | |
| 111 | AT | S PRAIRIE AVE | N/S | PARLL/PE | ELECTRIC SIGNAL LINI | TBD | 44+00 72+75 | TBD | R&R | YES | ALONG W EDGE OF S PRAIRIE AVE. CONFLICTS W/ STATION FROM STA. 45 TO 47+75 |
| 112 | AT | S PRAIRIE AVE | E/W | PERP | GAS LATERAL | TBD | 45+25 - | SCG | R&R | YES | CONFLICTS STATION STAIRWELL @ STA. 45+25 |
| 123 | W/AT | S PRAIRIE AVE | N/S | PARLL | 24" TRUNK SEWER | TBD | 44+00 54+50 | LACSD-5 | R&R | YES | RUNS ALONG S PRAIRIE AVE |
| 127 | AT | E NUTWOOD ST / S PRAIRIE AVE | N/S | PARLL/PERP | UG ELECTRIC LINE | TBD | 47+15 74+10 | SCE | R&R | YES | CONFLICTS W/ STATION FROM STA. 47+15-76, CONFLICTS W/ 19/27 COLUMNS ALONG W EDGE OF S PRAIRIE AVE |
| 133 | S | E NUTWOOD ST / S PRAIRIE AVE | E/W | PERP | UG ELECTRIC LINE | TBD | 51+31 | SCE | R&R | YES | XING E-SIDE COLUMN |
| 137 | AT | PINCAY DR / S PRAIRIE AVE | N/S-E/W | PARLL/PERP | ELECTRIC SIGNAL LINI | TBD | 54+00 55+13 | TBD | R&R | YES | ALL 4 SIDES OF INT. CONFLICTS W/ SW COLUMN |
| 145 | AT | PINCAY DR / S PRAIRIE AVE | N/S-E/W | PERP | OH ELECTRIC LINE | TBD | 54+87 - | SCE | R&R | YES | |
| 146 | W | PINCAY DR / S PRAIRIE AVE | | PARLL | GAS LINE | TBD | 55+00 74+00 | SCG | R&R | YES | |
| 157 | AT | E BUCKTHORN ST / S PRAIRIE AVE | N/S-EW | PARLL/PERP | ELECTRICA SIGNAL LII | TBD | 63+52 64+58 | TBD | R&R | YES | CONFLICTS 2 COLUMNS (NW & SW OF INT) |
| 160 | AT | E BUCKTHORN ST / S PRAIRIE AVE | N/S | PARLL | X" GAS LINE | TBD | 64+00 81+72 | SCG | R&R | YES | CONFLICTS WITH ALL 8 COLUMNS FROM STA. 75 TO 81+50 PREV. MARKED 8" SCG |
| 161 | S | E BUCKTHORN ST / S PRAIRIE AVE | N/S | PARLL | 2" GAS LINE | UNK | 64+60 68+17 | SCG | R&R | YES | |
| 168 | AT | ARBOR VITAE ST / S PRAIRIE AVE | N/S-E/W | PARLL/PERP | ELECTRIC SIGNAL LINI | TBD | 68+ 70+00 | TBD | R&R | YES | CONFLICTS 2 COLUMNS (NW, SW CORNERS OF INT) |
| 181 | S | ARBOR VITAE ST / S PRAIRIE AVE | N/S | PARLL | 8" WATER LINE | UNK | 70+00 82++ | COI | R&R | YES | CONFLICTS W/ 7 COLUMNS FROM STA. 74+50 TO 82+00 |
| 182 | S | ARBOR VITAE ST / S PRAIRIE AVE | N/S | PARLL | 8" SEWER LINE | UNK | 70+50 82++ | COI | R&R | YES | CONFLICTS W/ 5 COLUMNS DOWN S PRAIRIE AVE UNTIL STA. 75+00 |
| 183 | S | ARBOR VITAE ST / S PRAIRIE AVE | N/S | DIAG | ELECTRIC LINE | TBD | 72+47 73+30 | TBD | R&R | YES | BRANCH OFF FROM MAIN DOWN C/L |
| 190 | S | E VICTORY ST / S PRAIRIE AVE | E/W | PERP | WATER LATERAL | TBD | 78+72 - | TBD | R&R | YES | PREV. MARKED WBM |
| 191 | S | E VICTORY ST / S PRAIRIE AVE | E/W | PERP | 3X WATER LATERALS | TBD | 79+50 79+53 | TBD | R&R | YES | |
| 192 | W | S PRAIRIE AVE / E HARDY ST | N/S | PARLL | 4" GAS LINE | TBD | 80+80 81+72 | SCG | R&R | YES | OVERLAPS XIN GAS LINE |
| 195 | N | E HARDY ST / S PRAIRIE AVE | E/W | PERP | 2X UG ELECTRIC LINE | TBD | 82+00 82++ | SCE | R&R | YES | CONFLICTS WITH LAST COLUMN @ NW CORNER OF INT. |
| 196 | N | E HARDY ST / S PRAIRIE AVE | E/W | PERP | ELECTRIC SIGNAL LINI | TBD | 82+00 - | TBD | R&R | YES | |
| THESE NEED ADDITIONAL REVIEW- MAY BE MISSING FROM THE MODEL. DIFFICULT TO COMPARE DUE TO CHANGING INFORMATION | | | | | | | | | | | |
| 198 | E | S PRAIRIE AVE / E HARDY ST | | PARLL | 39" STORM DRAIN | | | LACSD-5 | | | RUNS ALONG S PRAIRIE ST |

¹ Conflicts marked as N/S/E/W/AT, indicating conflict is either "North of", "South of", "East of", "West of", or "At" the intersection listed in the next cell.

² Utility orientation with respect to the track guideway or station.

³ Depth in feet. "UNK" indicates utilities which have BaseMap callouts but no specified depth. "TBD" indicates utilities with no call out (via MarkThomas Survey).

⁴ Conflicts marked "YES" indicate utilities which impact columns. Utilities marked "NO" are located under the guideway. "MYB" indicates utilities which are in close proximity and may be in conflict with columns or stations.

B. UTILITY CONFLICT INVENTORY

Table B. Inglewood Transit Connector (ITC)
Utility Conflict Inventory Matrix
 Updated: 11 August 2021

| Color Legend: RED: Items which were previously mapped but have since been removed BLUE: Utilities with ownership or sizing changes across versions | | | | | | | | | | | | N to S based on track stationing | | Disposition Legend: Remove (R), Protect in Place (PIP), Support in Place (SIP), Remove & Relocate (R&R), Protect in Place/Replace as Necessary (PIP/R) | |
|---|-----------------------|------------------------------|---------|---------------------|----------------------|--------------------|----------------|-------|-----------------|---------|-----------------------|---|--|---|--|
| No. | Location ¹ | Intersection | Orient. | Direc. ² | Description | Depth ³ | Station Limits | | Owner | Dispos. | Conflict ⁴ | Comments | | | |
| 1 | W/N | N LOCUST ST / W FLORENCE ST | E/W | PERP | 2" GAS LINE | UNK | 00+00 | 00+00 | SCG | R&R | YES | XING STATION CONN. TO CRENSHAW LINE | | | |
| 2 | W/S | N LOCUST ST / W FLORENCE ST | E/W | PERP | (2X) ELECTRIC SIGNAL | TBD | 00+00 | 02+00 | TBD | R&R | YES | XING N EDGE OF STATION @ MARKET ST | | | |
| 3 | N | S MARKET ST / E REGENT ST | E/W | PERP | WATER LINE | 2.5 | 06+00 | - | UNK | PIP | NO | | | | |
| 4 | N | S MARKET ST / E REGENT ST | E/W | PERP | WATER LINE | 4.2 | 06+50 | - | UNK | R&R | YES | | | | |
| 5 | AT | S MARKET ST | N/S | PARLL | WATER MAIN LINE | UNK | 03+00 | 19+00 | UNK | PIP | NO | CROSSES FROM NW TO SE @ MARKET/REGENT, CROSSES FROM E TO W/CL @ QUEEN | | | |
| 6 | N | E FLORENCE AVE / LA BREA AVE | | PARLL | STORM LINE | TBD | 8+15 | - | COI | PIP | NO | N OF STREET C/L | | | |
| 7 | AT | S MARKET ST / E REGENT ST | N/S-E/W | PERP | ELECTRIC SIGNAL LINE | UNK | 08+10 | 09+00 | TBD | TBD | MYB | ALL SIDES OF INT., VERY CLOSE TO COLUMN AT STA. 09+00 | | | |
| 8 | AT | S MARKET ST / E REGENT ST | E/W | PERP | ELECTRIC LINE | UNK | 08+05 | - | SCE | PIP | NO | | | | |
| 9 | AT | S MARKET ST / E REGENT ST | E/W | PERP | 2X WATER LINE | UNK | 08+20 | 08+25 | UNK | PIP | NO | | | | |
| 10 | AT | S MARKET ST / E REGENT ST | | PERP | STORM LINE | TBD | 08+20 | - | COI | PIP | NO | RUNS ALONG E REGENT ST | | | |
| 11 | E | S MARKET ST / E REGENT ST | E/W | PARLL | 4" GAS LINE | UNK | 08+40 | - | SCG | PIP | NO | | | | |
| 12 | AT | S MARKET ST / E REGENT ST | E/W | PERP | ELECTRIC LINE | 3 | 08+60 | - | SCE | PIP | NO | | | | |
| 13 | AT | S MARKET ST / E REGENT ST | E/W | PERP | UG CONDUIT | UNK | 08+75 | - | AT&T | PIP | NO | | | | |
| 14 | AT | S MARKET ST / E REGENT ST | E/W | PERP | UG CONDUIT | UNK | 08+75 | - | SPECT, CC, VRZN | PIP | NO | ALL 3X IN ONE CONDUIT | | | |
| 15 | S | S MARKET ST / E REGENT ST | N/S | PARLL | 2X ELECTRIC LINE | TBD | 09+00 | 18+00 | SCE | PIP | NO | RUNS ALONG BOTH SIDES OF S MARKET ST | | | |
| 16 | S | S MARKET ST / E REGENT ST | E/W | PERP | 8X WATER LATERAL | TBD | 09+10 | 13+25 | TBD | PIP | NO | | | | |
| 17 | S | S MARKET ST / E REGENT ST | E/W | PERP | WATER LINE | TBD | 09+45 | - | TBD | PIP | NO | | | | |
| 18 | S | S MARKET ST / E REGENT ST | E/W | PERP | WATER LINE | TBD | 09+55 | - | UNK | PIP | NO | | | | |
| 19 | S | S MARKET ST / E REGENT ST | E/W | PERP | WATER LINE | TBD | 11+00 | - | UNK | R&R | YES | | | | |
| 20 | S | S MARKET ST / E REGENT ST | E/W | PERP | 5X WATER LATERAL | TBD | 11+00 | 12+00 | UNK | PIP | NO | | | | |
| 21 | S | S MARKET ST / E REGENT ST | E/W | PERP | WATER LINE | 1.7 | 11+40 | - | UNK | PIP | NO | | | | |
| 22 | S | S MARKET ST / E REGENT ST | E/W | PERP | WATER LINE | TBD | 11+80 | - | UNK | PIP | NO | | | | |
| 23 | S | S MARKET ST / E REGENT ST | E/W | PERP | WATER LINE | 2.2 | 12+15 | - | UNK | PIP | NO | | | | |
| 24 | S | S MARKET ST / E REGENT ST | E/W | PERP | WATER LINE | TBD | 13+20 | - | TBD | R&R | YES | | | | |
| 25 | AT | S MARKET ST / E REGENT ST | E/W-N/S | PARLL/PE | ELECTRIC SIGNAL LINE | TBD | 13+30 | 14+25 | TBD | PIP | NO | ALL SIDES OF INT. | | | |
| 26 | AT | S MARKET ST / E QUEEN ST | E/W | PERP | UG TELECOM | TBD | 13+80 | - | SPECT | PIP | NO | RUNS ALONG E REGENT ST | | | |
| 27 | AT | S MARKET ST / E QUEEN ST | E/W | PERP | UG CONDUIT | TBD | 13+81 | - | VRZN | PIP | NO | | | | |
| 28 | AT | S MARKET ST / E QUEEN ST | E/W | PERP | STORM DRAIN LINE | TBD | 14+00 | - | COI | PIP | NO | RUNS ALONG E REGENT ST | | | |
| 29 | S | S MARKET ST / E QUEEN ST | E/W | PERP | 2X WATER LATERAL | TBD | 14+30 | 14+40 | TBD | PIP | NO | | | | |
| 30 | S | S MARKET ST / E QUEEN ST | E/W | PERP | 2X WATER LATERAL | TBD | 14+50 | 14+55 | TBD | R&R | YES | BOTH XING COLUMN | | | |
| 31 | S | S MARKET ST / E QUEEN ST | E/W | PERP | 2X WATER LATERAL | TBD | 14+60 | 15+20 | TBD | PIP | NO | | | | |

¹ Conflicts marked as N/S/E/W/AT, indicating conflict is either "North of", "South of", "East of", "West of", or "At" the intersection listed in the next cell.

² Utility orientation with respect to the track guideway or station.

³ Depth in feet. "UNK" indicates utilities which have BaseMap callouts but no specified depth. "TBD" indicates utilities with no call out (via MarkThomas Survey).

⁴ Conflicts marked 'YES' indicate utilities which impact columns. Utilities marked "NO" are located under the guideway. "MYB" indicates utilities which are in close proximity and may be in conflict with columns or stations.

| No. | Location ¹ | Intersection | Orient. | Direc. ² | Description | Depth ³ | Station Limits | Owner | Dispos. | Conflict ⁴ | Comments |
|-----|-----------------------|---------------------------------|---------|---------------------|----------------------|--------------------|----------------|---------|---------|-----------------------|--|
| 32 | S | S MARKET ST / E QUEEN ST | E/W | PERP | 7X WATER LATERAL | TBD | 14+90 17+20 | UNK | PIP | NO | |
| 33 | N | S MARKET ST / E QUEEN ST | E/W | PERP | WATER LATERAL | TBD | 17+45 - | TBD | PIP | NO | |
| 34 | AT | S MARKET ST / W MANCHESTER BLVD | E/W-N/S | PARLL/PERP | ELECTRIC SIGNAL LINE | TBD | 17+65 19+00 | TBD | R&R | YES | CONFLICTS W/ SADDLE-BENT @ NE CORNER OF INT. |
| 35 | AT | S MARKET ST / W MANCHESTER BLVD | E/W | PARLL/PERP | UG TELECOM | TBD | 18+00 28+00 | AT&T | R&R | YES | CONFLICTS W/ SADDLE-BENT @ STA. 18+00, STA. 19+00 |
| 36a | AT | S MARKET ST / W MANCHESTER BLVD | E/W | PARLL | ELECTRIC SIGNAL LINE | TBD | 18+00 26+88 | TBD | R&R | YES | CONFLICTS W/ SADDLE-BENT @ NE CORNER OF INT., RUNS ALONG N EDGE OF MANCHESTER BLVD |
| 37a | AT | S MARKET ST / W MANCHESTER BLVD | E/W | PARLL | ELECTRIC SIGNAL LINE | TBD | 18+00 22+00 | TBD | PIP | NO | |
| 38 | AT | S MARKET ST / W MANCHESTER BLVD | E/W | PARLL/PE | 12" WATER MAIN LINE | TBD | 18+00 29+50 | COI | PIP | NO | ALONG S EDGE OF MANCHESTER BLVD, XING UNK N/W MAIN @ INT. |
| 39 | N | W MANCHESTER BLVD | E/W | PERP | STORM LINE | TBD | 18+00 19+00 | COI | PIP | NO | CROSSES S MARKET ST |
| 40 | AT | W MANCHESTER BLVD | N/S | PERP | 7X WATER LATERAL | TBD | 18+00 20+45 | COI | PIP | NO | CONN. TO 12" MAIN ON MANCHESTER BLVD |
| 41 | N | W MANCHESTER BLVD | E/W | PARLL | STORM LINE | TBD | 19+00 22+90 | COI | PIP | NO | |
| 42 | AT | W MANCHESTER BLVD | | PARLL | WATER LINE | TBD | 19+00 44+00 | WBM | PIP | NO | ALONG S EDGE OF ROADWAY |
| 43 | S | W MANCHESTER BLVD | E/W | PARLL | 2" GAS LINE | TBD | 19+20 20+10 | SCG | PIP | NO | RUNS ALONG W MANCHESTER BLVD |
| 44 | E | S MARKET ST / W MANCHESTER BLVD | N/S | PERP | UG ELECTRIC LINE | TBD | 19+97 20+12 | SCE | PIP | NO | XING MANCHESTER BLVD FROM N TO S |
| 45 | W | N LOCUST ST / W MAN. BLVD | N/S | PERP | SEWER LINE | UNK | 20+06 - | TBD | PIP/R | MYB | |
| 46 | W | N LOCUST ST / W MAN. BLVD | E/W | PARLL | SEWER LINE | UNK | 20+06 27+54 | COI | PIP/R | MYB | RUNS ALONG W MANCHESTER BLVD |
| 47 | W | N LOCUST ST / W MAN. BLVD | N/S | PERP | 2-3" GAS LINE | UNK | 20+10 - | SCG | PIP/R | MYB | 2" N OF INT. 3" THROUGH INT. |
| 48 | AT | N LOCUST ST / W MAN. BLVD | E/W | PARLL | 2" GAS LINE | UNK | 20+10 21+15 | SCG | PIP | NO | |
| 49 | W | N LOCUST ST / W MAN. BLVD | N/S | PERP | UG TELECOM | UNK | 20+12 - | VRZN | R&R | YES | |
| 50 | W | N LOCUST ST / W MAN. BLVD | N/S | PERP | UG TELECOM | UNK | 20+13 - | CC | R&R | YES | |
| 51 | W | N LOCUST ST / W MAN. BLVD | N/S | PERP | UG TELECOM | UNK | 20+13 - | SPECT | R&R | YES | |
| 52 | AT | W MANCHESTER BLVD | E/W | PARLL | ELECTRIC LINE | TBD | 20+14 22+64 | SCE | PIP | NO | RUNS ALONG N EDGE OF W MANCHESTER BLVD |
| 53 | AT | W MANCHESTER BLVD | E/W-N/S | PARLL | ELECTRIC SIGNAL LINE | UNK | 20+20 20+48 | TBD | PIP | NO | RECT ALONG N EDGE OF W MANCHESTER BLVD |
| 54 | W | N LOCUST ST / W MAN. BLVD | N/S | PERP | WATER LATERAL | TBD | 20+38 - | UNK/COI | PIP | NO | |
| 55 | W | N LOCUST ST / W MAN. BLVD | N/S | PERP | WATER LATERAL | TBD | 20+45 - | UNK/COI | PIP | NO | |
| 56 | W | N LOCUST ST / W MAN. BLVD | N/S | PERP | WATER LATERAL | TBD | 20+91 - | UNK/COI | R&R | YES | |
| 57 | W | N LOCUST ST / W MAN. BLVD | N/S | PERP | WATER LATERAL | TBD | 21+27 - | UNK/COI | PIP | NO | |
| 58 | AT | N LOCUST ST / W MAN. BLVD | N/S | PERP | WATER LATERAL | TBD | 21+58 - | UNK/COI | PIP | NO | |
| 59 | AT | N LOCUST ST / W MAN. BLVD | N/S-E/W | PARLL/PE | ELECTRIC SIGNAL LINE | TBD | 22+13 22+78 | TBD | PIP | NO | ALL 4 SIDES OF INT. |
| 60 | E | N LOCUST ST / W MAN. BLVD | E/W | PARLL | ELECTRIC SIGNAL LINE | TBD | 22+78 26+32 | TBD | PIP | NO | CONNECTS TO INT. ELEC-SL, ALONG S EDGE OF W MANCHESTER BLVD |
| 61 | AT | N LOCUST ST / W MAN. BLVD | N/S | PERP | WATER LINE | TBD | 22+50 22+59 | UNK/COI | PIP | NO | BENDS TO JOIN 6" COI LINE |
| 62 | AT | N LOCUST ST / W MAN. BLVD | N/S | PERP | 6" WATER LINE | UNK | 22+59 - | COI | PIP | NO | MEETS BENT LINE |
| 63 | AT | N LOCUST ST / W MAN. BLVD | N/S | PERP | 2" GAS LINE | UNK | 22+63 - | SCG | PIP | NO | ALONG N LOCUST ST |
| 64 | AT | N LOCUST ST / W MAN. BLVD | E/W | PARLL | 2" GAS LINE | UNK | 22+63 24+60 | SCG | PIP | NO | ALONG S EDGE OF W MANCHESTER BLVD |
| 65 | AT | N LOCUST ST / W MAN. BLVD | N/S | PERP | ELECTRIC LINE | UNK | 22+65 - | SCE | PIP | NO | MEETS INT. SIGNAL LIGHTS, RUNS N/S ALONG LOCUST ST TO FLORENCE |
| 66 | E | N LOCUST ST / W MAN. BLVD | E/W-N/S | PARLL | ELECTRIC SIGNAL LINE | TBD | 22+84 - | TBD | PIP | NO | RECT ALONG N EDGE OF W MANCHESTER BLVD |
| 67 | E | N LOCUST ST / W MAN. BLVD | N/S | PERP | 4X WATER LATERALS | TBD | 23+90 24+62 | UNK | PIP | NO | |
| 68 | E | N LOCUST ST / W MAN. BLVD | E/W-N/S | PARLL | ELECTRIC SIGNAL LINE | TBD | 24+50 24+85 | TBD | PIP | NO | RECT ALONG N EDGE OF W MANCHESTER BLVD |

| No. | Location ¹ | Intersection | Orient. | Direc. ² | Description | Depth ³ | Station Limits | | Owner | Dispos. | Conflict ⁴ | Comments |
|-----|-----------------------|--|---------|---------------------|----------------------|--------------------|----------------|-------|---------|---------|-----------------------|--|
| 69 | W | N LOCUST ST / W MAN. BLVD | | PERP | WATER LINE | TBD | 24+50 | - | COI | PIP | NO | XING ROADWAY FROM N TO S SIDE (XING MAIN LINE) |
| 70 | AT | N LOCUST ST / W MAN. BLVD | | PERP | WATER LINE | TBD | 25+01 | - | COI | R&R | YES | XING INT. FROM N TO S (XING MAIN LINE) |
| 36b | AT | S MARKET ST / W MANCHESTER BLVD | E/W | PARLL | ELECTRIC SIGNAL LINE | TBD | 18+00 | 26+88 | TBD | R&R | YES | CONTD, CONFLICTS WITH SADDLE BENT @ N EDGE OF W MAN. BLVD ~ STA. 25+00 |
| 37b | AT | N HILLCREST BLVD / W MANCHESTER BLVD | E/W | PARLL | ELECTRIC SIGNAL LINE | TBD | 22+78 | 26+32 | TBD | PIP/R | MYB | CONTD, ALONG S EDGE OF W MANCHESTER BLVD |
| 71 | AT | N HILLCREST BLVD / W MANCHESTER BLVD | N/S-E/W | PARLL/PERP | ELECTRIC LINE | TBD | 26+33 | 27+87 | SCE | R&R | YES | ALL 4 SIDES OF INT., CONFLICT @ NW CORNER SADDLE BENT |
| 72 | S | EAST HILLCREST / WEST MANCHESTER BLVD | | PERP | GAS LINE | TBD | 27+50 | 28+25 | SCG | PIP | NO | CROSSES W MAN. BLVD ALONG E HILLCREST |
| 73 | AT | N HILLCREST BLVD / W MANCHESTER BLVD | N/S | PERP | SEWER LINE | TBD | 27+55 | - | COI | PIP | NO | CONN. TO E/W SS LINE |
| 74 | AT | N HILLCREST BLVD / W MANCHESTER BLVD | N/S | PARLL | 6" WATER LINE | TBD | 27+60 | 36+60 | COI | PIP | NO | CONT. ALONG S EDGE OF W MAN. BLVD |
| 75 | E | N HILLCREST BLVD / W MANCHESTER BLVD | N/S | PARLL | ELECTRIC SIGNAL LINE | TBD | 27+87 | 32+00 | TBD | R&R | YES | CONFLICTS W/ 4 COLUMNS ALONG S/W EDGE OF W MAN. BLVD |
| 76 | E | N HILLCREST BLVD / W MANCHESTER BLVD | N/S-E/W | PARLL/PERP | ELECTRIC SIGNAL LINE | TBD | 27+90 | 29+00 | TBD | R&R | YES | CONFLICTS WITH SADDLE BENT @ N EDGE OF W MAN. BLVD, CONT. ALONG MANCHESTER TERRACE |
| 77 | E | N HILLCREST BLVD / W MANCHESTER BLVD | N/S | PERP | WATER LATERAL | TBD | 28+05 | - | UNK | PIP | NO | |
| 78 | AT | MANCHESTER TERRACE / W MANCHESTER BLVD | N/S-E/W | PERP | WATER LINE | TBD | 28+85 | - | LADWP | PIP | NO | NE EDGE TO MAIN LINE (PART. ALONG MAN. TERRACE) |
| 79 | E | MANCHESTER TERRACE / W MANCHESTER BLVD | N/S | PARLL | 8" SEWER LINE | 12 | 28+95 | 33+06 | COI | PIP | NO | PREV. MARKED LACSD-5 |
| 80 | E | MANCHESTER TERRACE / W MANCHESTER BLVD | N/S | PARLL | ELECTRIC SIGNAL LINE | TBD | 29+02 | 33+20 | TBD | R&R | YES | XING. COLUMN @ NW CORNER OF MAN. DRIVE / W MAN. BLVD INT. |
| 81 | E | MANCHESTER TERRACE / W MANCHESTER BLVD | E/W | PERP | 2X WATER LATERAL | TBD | 29+50 | 30+60 | UNK | PIP | NO | PREV. MARKED LADWP |
| 82 | S | N HILLCREST BLVD / W MANCHESTER BLVD | N/S | PERP | 12" WATER LINE | TBD | 29+50 | 36+70 | COI | PIP | NO | |
| 83 | NW | E SPRUVE AVE / W MAN. BLVD | E/W | PERP | ELECTRIC LINE | TBD | 31+97 | 32+00 | SCE | PIP/R | MYB | XING INT ON NW SIDE |
| 84 | AT | E SPRUVE AVE / W MAN. BLVD | N/S | PARLL | ELECTRIC LINE | TBD | 32+00 | 32+52 | TBD | PIP/R | MYB | XING INT ON SW SIDE |
| 85 | W | E SPRUVE AVE / W MAN. BLVD | - | PERP | WATER LINE | TBD | 32+10 | - | UNK | PIP | NO | SW EDGE TO MAIN LINE |
| 86 | AT | E SPRUVE AVE / W MAN. BLVD | E/W | PERP | 2" WATER LINE | TBD | 32+19 | - | COI | PIP | NO | CONN. TO 6" COI N/S LINE |
| 87 | AT | E SPRUVE AVE / W MANCHESTER BLVD | N/S-E/W | PERP | 10" STORM DRAIN | TBD | 32+43 | - | LACFCD | PIP | NO | PREV. MARKED AS CONCRETE GUTTER SD. RUNS ALONG E SPRUVE AVE, CROSSES W MAN. BLVD & CONT. N TO MAN. TERRACE |
| 88 | AT | E SPRUVE AVE / W MANCHESTER BLVD | N/S-E/W | PERP | 8" SEWER LINE | 12? | 32+50 | 34++ | LACSD-5 | PIP | NO | ALONG E SPRUVE AVE, CROSSES W MAN. BLVD & CONT. N TO MAN. TERRACE & E ALONG MAN. DR. PREV. MARKED AS PARTIALLY ABND. |
| 89 | E | E SPRUVE AVE / W MAN. BLVD | N/S | PARLL | ELECTRIC SIGNAL LINE | TBD | 32+80 | 36+78 | TBD | R&R | YES | INT. 2 COLUMNS ALONG S EDGE OF W MAN. BLVD |
| 90 | E | E SPRUVE AVE / W MAN. BLVD | E/W | PERP | 2X WATER LATERAL | TBD | 33+00 | 33+27 | TBD | R&R | YES | 1ST INT. COLUMN ALONG S EDGE OF W MAN. BLVD |
| 91 | E | E SPRUVE AVE / W MAN. BLVD | E/W | PERP | WATER LINE | TBD | 33+08 | - | UNK | PIP | NO | NE EDGE TO MAIN LINE |
| 92 | AT/E | MANCHESTER DR / W MAN. BLVD | N/S-E/W | PARLL/PERP | 2" GAS LINE | UNK | 33+46 | 42+42 | UNK | R&R | YES | RUNS E ALONG MAN. DR., XING INT & CONT. ALONG SW EDGE OF W MAN. BLVD (CONFLICTS 6 COLUMNS). PREV. MARKED AS SCG |
| 93 | E | MANCHESTER DR / W MAN. BLVD | N/S | PARLL | ELECTRIC SIGNAL LINE | TBD | 34+30 | 36+44 | TBD | PIP | NO | ALONG NE EDGE OF MAN. BLVD |
| 94 | E | MANCHESTER DR / W MAN. BLVD | E/W | PERP | WATER LINE | TBD | 34+34 | - | UNK | PIP | NO | NE EDGE TO MAIN LINE (PARTIALLY ALONG S EDGE OF MAN. DR) |
| 95 | E | MANCHESTER DR / W MAN. BLVD | N/S | PARLL | WATER LINE | TBD | 34+34 | 37+40 | UNK | PIP | NO | ALONG S-C/L OF MAN. BLVD |

| No. | Location ¹ | Intersection | Orient. | Direc. ² | Description | Depth ³ | Station Limits | Owner | Dispos. | Conflict ⁴ | Comments |
|---|-----------------------|--|---------|---------------------|----------------------|--------------------|----------------|------------|---------|-----------------------|---|
| 96 | E | MANCHESTER DR / W MAN. BLVD | E/W | PERP | 5X WATER LATERALS | TBD | 35+08 36+32 | UNK | PIP | NO | |
| 97 | E | MANCHESTER DR / W MAN. BLVD | E/W | PERP | 2X WATER LATERALS | TBD | 35+81 35+88 | TBD | R&R | YES | |
| 98 | W | E TAMARACK AVE / W MAN. BLVD | N/S | PARLL | ELECTRIC LINE | TBD | 36+44 36+68 | TBD | PIP | NO | ALONG NE EDGE OF MAN. BLVD |
| 99 | W | E TAMARACK AVE / W MAN. BLVD | N/S | PARLL | ELECTRIC SIGNAL LINE | TBD | 36+68 39+50 | TBD | R&R | YES | CONFLICTS 3 COLUMNS ALONG NE EDGE OF MAN. BLVD |
| 100 | E | E TAMARACK AVE / W MAN. BLVD | - | PARLL | 8" SEWER LINE | TBD | 37+00 44+00 | LACSD-5 | R | NO | BEGINS ON E TAMARACK AND TURNS TO RUN ALONG W MANCHESTER BLVD |
| 101 | E | E TAMARACK AVE / W MAN. BLVD | E/W | PERP | 2X WATER LATERAL | TBD | 37+48 37+56 | UNK | PIP/R | MYB | |
| 102 | E | E TAMARACK AVE / W MAN. BLVD | E/W | PARLL | ELECTRIC SIGNAL LINE | TBD | 37+51 39+55 | TBD | R&R | YES | CONFLICTS ALL 3 COLUMNS ALONG S-C/L OF W MAN. BLVD |
| 103 | E | E TAMARACK AVE / W MAN. BLVD | E/W | PARLL | WATER LINE | TBD | 37+77 44+00 | UNK | PIP | NO | RUNS ALONG S-C/L OF W MAN. BLVD |
| 104 | E | E TAMARACK AVE / W MAN. BLVD | N/S | PERP | 7X WATER LATERAL | TBD | 38+11 39+65 | TBD | PIP | NO | |
| 105 | W | S OSAGE / W MACHESTER BLVD | E/W | PARLL | 2" GAS LINE | UNK | 38+27 41+75 | UNK | PIP/R | MYB | ALONG N EDGE OF W MAN. BLVD, CLOSE TO 2 COLUMNS |
| 106 | E | S OSAGE / W MACHESTER BLVD | E/W | PARLL | ELECTRIC SIGNAL LINE | TBD | 40+27 43+75 | TBD | PIP | NO | |
| 107 | E | S OSAGE / W MACHESTER BLVD | N/S | PERP | 4X WATER LATERALS | TBD | 40+41 41+30 | TBD | PIP/R | MYB | POSSIBLE CONFLICT W/ COLUMN @ SE EDGE OF INT. |
| 108 | E | S OSAGE / W MACHESTER BLVD | E/W | PARLL | ELECTRIC SIGNAL LINE | TBD | 40+41 44+00 | TBD | R&R | YES | CONFLICTS ALL 2 COLUMNS ALONG S EDGE OF W MAN. BLVD |
| 109 | E | S OSAGE / W MACHESTER BLVD | N/S | PERP | WATER LATERAL | TBD | 41+63 - | TBD | R&R | YES | |
| 110 | E | S OSAGE / W MACHESTER BLVD | N/S | PERP | 3X WATER LATERALS | TBD | 42+08 43+40 | TBD | PIP | NO | |
| TO ACCOMMODATE LONG N/S UTILITY RUNS, SOUTH OF W MANCHESTER BLVD / S PRAIRIE AVE INTERSECTION, UTILITES ARE LISTED IN ORDER OF CONFLICT FROM NORTH TO SOUTH AND EAST TO WEST DESPITE TRUE UTILITY RUN STATIONING. | | | | | | | | | | | |
| 111 | AT | S PRAIRIE AVE | N/S | PARLL/PE | ELECTRIC SIGNAL LINE | TBD | 44+00 72+75 | TBD | R&R | YES | ALONG W EDGE OF S PRAIRIE AVE. CONFLICTS W/ STATION FROM STA. 45 TO 47+75 |
| 112 | AT | S PRAIRIE AVE | E/W | PERP | GAS LATERAL | TBD | 45+25 - | SCG | R&R | YES | CONFLICTS STATION STAIRWELL @ STA. 45+25 |
| 113 | AT | S PRAIRIE AVE | N/S | PERP | UG ELECTRIC LINE | TBD | +++4+00 47+68 | SCE | PIP/R | MYB | CONFLICTS STATION FROM STA 45+51-67 & 46+80 TO 47+68 |
| 114 | AT | S PRAIRIE AVE | N/S | PARLL/PE | 12" SEWER LINE | 2.5 | +++4+00 54+48 | LACSD-5 | PIP/R | MYB | CONFLICTS STATION FROM STA 45+51-67 & 47+00 TO 47+77 |
| 115 | AT | S PRAIRIE AVE | N/S | PARLL/PERP | 8" GAS LINE | 2.7 | +++4+00 82++ | SCG | PIP/R | MYB | CONFLICTS STATION FROM STA 45+51-67 & 47+00 TO 47+77, CONFLICTS ALL 18 COLUMNS FROM STA 58 TO 74 |
| 116 | AT | S PRAIRIE AVE | N/S | PARLL | WATER LINE | TBD | +++4+00 69+90 | TBD | PIP/R | MYB | |
| 117 | AT | S PRAIRIE AVE | N/S | PARLL/PE | UG ELECTRIC LINE | UNK | +++4+00 82++ | SCE | PIP/R | MYB | |
| 118 | AT | S PRAIRIE AVE | N/S | PARLL | 36" WATER LINE | 2.5 | 44+00 82++ | WBM | PIP/R | MYB | |
| 119 | AT | S PRAIRIE AVE | N/S | PARLL | 36" WATER LINE | 2.5 | 44+00 82++ | WBM | PIP/R | MYB | XING ROADWAY TO E EDGE ~STA. 81+75 |
| 120 | AT | S PRARIE AVE | N/S | PARLL | 60" RCP WATER LINE | 3 | 44+00 82+00 | LADWP | PIP/R | MYB | |
| 121 | N | EAST OF SOUTH PRAIRIE AVE / ALONG WEST MANCHESTER BLVD | | PARLL | 10" SEWER LINE | UNK | 44+00 54+50 | LACSD-5 | PIP/R | MYB | |
| 122 | N | E NUTWOOD ST / S PRAIRIE AVE | E/W | PERP | WATER LATERAL | TBD | 46+80 - | TBD | PIP/R | MYB | |
| 123 | W/AT | S PRAIRIE AVE | N/S | PARLL | 24" TRUNK SEWER | TBD | 44+00 54+50 | LACSD-5 | R&R | YES | RUNS ALONG S PRAIRIE AVE |
| 124 | AT | S PRARIE AVE | N/S | PARLL/PE | ELECTRIC SIGNAL LINE | TBD | 44+15 73+00 | TBD | PIP/R | MYB | |
| 125 | AT | SOUTH PRAIRIE AVE | E/W | PERP | 5' RCP SD | TBD | 46+00 - | COI | PIP | NO | CROSSES S PRAIRIE AVE |
| 126 | S | S PRARIE AVE / W MANCHESTER BLVD | E/W | PERP | WATER LINE | TBD | 46+50 - | West Basin | PIP | NO | W EDGE TO WESTERN MOST WATER MAIN LINE |
| 127 | AT | E NUTWOOD ST / S PRAIRIE AVE | N/S | PARLL/PERP | UG ELECTRIC LINE | TBD | 47+15 74+10 | SCE | R&R | YES | CONFLICTS W/ STATION FROM STA. 47+15-76, CONFLICTS W/ 19/27 COLUMNS ALONG W EDGE OF S PRAIRIE AVE |
| 128 | AT | E NUTWOOD ST / S PRAIRIE AVE | E/W | PERP | 6" WATER LINE | UNK | 47+67 - | COI | PIP/R | MYB | PARLL ALONG N EDGE OF NUTWOOD, JOINS WESTERN WATER MAIN LINE ON PRARIE |

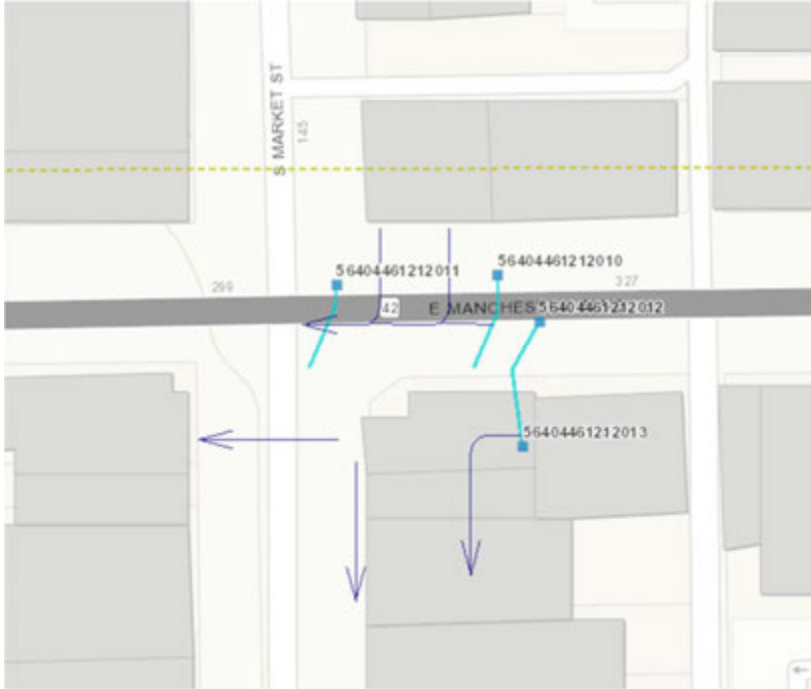
| No. | Location ¹ | Intersection | Orient. | Direc. ² | Description | Depth ³ | Station Limits | | Owner | Dispos. | Conflict ⁴ | Comments |
|-----|-----------------------|--------------------------------|---------|---------------------|------------------------|--------------------|----------------|-------|------------|---------|-----------------------|--|
| 129 | AT | E NUTWOOD ST / S PRAIRIE AVE | E/W | PERP | WATER LINE | TBD | 47+75 | - | West Basin | PIP | NO | PARLL ALONG N EDGE OF NUTWOOD, JOINS CENTER WATER MAIN LINE ON PRAIRIE |
| 130 | S | E NUTWOOD ST / S PRAIRIE AVE | E/W | PERP | UG ELECTRIC LINE | TBD | 49+44 | - | SCE | PIP | NO | |
| 131 | S | E NUTWOOD ST / S PRAIRIE AVE | N/S | PARLL | UG TELECOMM | UNK | 49+50 | 65+50 | UNK | PIP | NO | PREV. MARKED L3COMM |
| 132 | S | E NUTWOOD ST / S PRAIRIE AVE | E/W | PERP | WATER LATERAL | TBD | 50+77 | - | TBD | PIP | NO | |
| 133 | S | E NUTWOOD ST / S PRAIRIE AVE | E/W | PERP | UG ELECTRIC LINE | TBD | 51+31 | - | SCE | R&R | YES | XING E-SIDE COLUMN |
| 134 | S | E NUTWOOD ST / S PRAIRIE AVE | E/W | PERP | X" GAS LINE | UNK | 52+40 | - | UNK | PIP | NO | |
| 135 | S | E NUTWOOD ST / S PRAIRIE AVE | E/W | PERP | GAS LATERAL | TBD | 52+60 | - | SCG | PIP | NO | PREV. MARKED SCG |
| 136 | S | E NUTWOOD ST / S PRAIRIE AVE | E/W | PERP | WATER LINE | TBD | 50+58 | - | TBD | PIP | NO | |
| 137 | AT | PINCAY DR / S PRAIRIE AVE | N/S-E/W | PARLL/ PERP | ELECTRIC SIGNAL LINE | TBD | 54+00 | 55+13 | TBD | R&R | YES | ALL 4 SIDES OF INT. CONFLICTS W/ SW COLUMN |
| 138 | AT | PINCAY DR / S PRAIRIE AVE | E/W | PERP | WATER LINE | TBD | 54+50 | - | WBM | PIP | NO | PARLL ALONG N EDGE OF PINCAY, JOINS WESTERN WATER MAIN LINE, 2 N/S CONNECTORS W OF INT. |
| 139 | AT | PINCAY DR / S PRAIRIE AVE | E/W | PERP | 27" TRUNK SEWER | TBD | 54+50 | - | LACSD-5 | PIP | NO | CROSSES S PRAIRIE ST |
| 140 | AT | PINCAY DR / S PRAIRIE AVE | E/W | PERP | WATER LINE | TBD | 54+48 | - | TBD | PIP | NO | |
| 141 | E | SOUTH PRAIRIE AVE / E KELSO ST | N/S | PARLL | ABND SEWER | TBD | 54+50 | 69+25 | LACSD-5 | R | NO | RUNS ALONG S PRAIRIE ST |
| 142 | AT | PINCAY DR / S PRAIRIE AVE | E/W | PERP | 12" SEWER LINE | 2.5 | 54+51 | - | LACSD-5 | PIP | NO | |
| 143 | AT | PINCAY DR / S PRAIRIE AVE | E/W | PERP | 6" WATER LINE | TBD | 54+71 | - | COI | PIP | NO | |
| 144 | AT | PINCAY DR / S PRAIRIE AVE | E/W | PERP | 2X UG ELECTRIC LINE | TBD | 54+71 | 54+87 | SCE | PIP | NO | |
| 145 | AT | PINCAY DR / S PRAIRIE AVE | N/S-E/W | PERP | OH ELECTRIC LINE | TBD | 54+87 | - | SCE | R&R | YES | |
| 146 | W | PINCAY DR / S PRAIRIE AVE | | PARLL | GAS LINE | TBD | 55+00 | 74+00 | SCG | R&R | YES | |
| 147 | AT | PINCAY DR / S PRAIRIE AVE | E/W | PERP | 4" GAS LINE | TBD | 55+22 | - | SCG | PIP | NO | CROSSES S PRAIRIE ST & CONT. ALONG PINCAY DR, PREV. MARKED SCG |
| 148 | S | PINCAY DR / S PRAIRIE AVE | E/W | PERP | WATER LATERAL | TBD | 56+52 | - | | PIP | NO | W EDGE TO WESTERN WATER MAIN LINE ON PRAIRIE. PREV. MARKED WBM |
| 149 | AT | E PALMA DR / S PRAIRIE AVE | E/W | PERP | UG ELECTRIC LINE | TBD | 59+55 | - | TBD | PIP | NO | |
| 150 | S | S PRAIRIE AVE / PINCAY DR | - | PERP | WATER LINE | TBD | 58+75 | - | WBM | PIP | NO | E EDGE TO CENTER WATER MAIN LINE ON PRAIRIE |
| 151 | AT | E PALMA DR / S PRAIRIE AVE | E/W | PERP | WATER LATERAL | TBD | 59+95 | - | TBD | PIP | NO | PARLL ALONG C/L OF LA BREA, JOINS WESTERN WATER MAIN LINE, 1 SOUTHBOUND CONNECTOR W OF INT. |
| 152 | S | E PALMA DR / S PRAIRIE AVE | E/W | PERP | 2X WATER LATERAL | TBD | 60+44 | 60+60 | TBD | PIP | NO | PREV. MARKED WBM |
| 153 | S | E PALMA DR / S PRAIRIE AVE | N/S | PARLL | UG TELECOM | UNK | 60+43 | 63+60 | UNK | PIP/R | MYB | NEAR MANY COLUMNS ALONG W EDGE OF S PRAIRIE AVE |
| 154 | S | E PALMA DR / S PRAIRIE AVE | E/W | PERP | 2X GAS LATERAL | TBD | 61+21 | 61+62 | SCG | PIP | NO | |
| 155 | S | E PALMA DR / S PRAIRIE AVE | E/W | PERP | WATER LATERAL | TBD | 63+25 | - | TBD | PIP | NO | W EDGE TO WESTERN WATER MAIN LINE. PREV. MARKED WBM |
| 156 | S | E PALMA DR / S PRAIRIE AVE | E/W | PERP | 6" GAS LINE | UNK | 63+36 | - | SCG | PIP | NO | |
| 157 | AT | E BUCKTHORN ST / S PRAIRIE AVE | N/S-EW | PARLL/ PERP | ELECTRICAL SIGNAL LINE | TBD | 63+52 | 64+58 | TBD | R&R | YES | CONFLICTS 2 COLUMNS (NW & SW OF INT) |
| 158 | N | E BUCKTHORN ST / S PRAIRIE AVE | E/W | PERP | UG TELECOM | TBD | 63+63 | - | TBD | PIP/R | MYB | |
| 159 | AT | E BUCKTHORN ST / S PRAIRIE AVE | E/W | PERP | 6" WATER LATERAL | 3.5 | 64+24 | - | COI | PIP | NO | PARLL ALONG C/L OF BUCKTHORN, JOINS WESTERN WATER MAIN, 1 SOUTHBOUND CONNECTOR W OF INT., PREV. MARKED WBM |
| 160 | AT | E BUCKTHORN ST / S PRAIRIE AVE | N/S | PARLL | X" GAS LINE | TBD | 64+00 | 81+72 | SCG | R&R | YES | CONFLICTS WITH ALL 8 COLUMNS FROM STA. 75 TO 81+50 PREV. MARKED 8" SCG |
| 161 | S | E BUCKTHORN ST / S PRAIRIE AVE | N/S | PARLL | 2" GAS LINE | UNK | 64+60 | 68+17 | SCG | R&R | YES | |
| 162 | S | E BUCKTHORN ST / S PRAIRIE AVE | E/W | PERP | 2" GAS LINE | TBD | 64+80 | - | SCG | PIP | NO | |

| No. | Location ¹ | Intersection | Orient. | Direc. ² | Description | Depth ³ | Station Limits | | Owner | Dispos. | Conflict ⁴ | Comments |
|-----|-----------------------|-----------------------------------|---------|---------------------|-----------------------|--------------------|----------------|-------|---------|---------|-----------------------|---|
| 163 | S | E BUCKTHORN ST / S PRAIRIE AVE | E/W | PERP | 4X WATER LATERAL | TBD | 64+68 | 68+41 | TBD | PIP | NO | PREV. MARKED WBM |
| 164 | AT | E BUCKTHORN ST / S PRAIRIE AVE | E/W | PERP | X" GAS LINE | TBD | 66+50 | - | SCG | PIP | NO | |
| 165 | AT | ARBOR VITAE ST / S PRAIRIE AVE | N/S | PARLL | X" WATER MAIN LINE | TBD | 67+52 | 74+00 | WBM | PIP | NO | W OF PREVIOUS EASTERN WATER MAIN LINE |
| 166 | AT | ARBOR VITAE ST / S PRAIRIE AVE | N/S-E/W | PARLL/ PERP | UG ELECTRIC LINE | TBD | 68+75 | 70+13 | SCE | PIP | NO | L-SHAPE ACROSS N AND E SIDES OF INT |
| 167 | E | ARBOR VITAE ST / S PRAIRIE AVE | E/W | PERP | STORM DRAIN LINE | TBD | 69+00 | - | COI | PIP | NO | |
| 168 | AT | ARBOR VITAE ST / S PRAIRIE AVE | N/S-E/W | PARLL/ PERP | ELECTRIC SIGNAL LINE | TBD | 68+ | 70+00 | TBD | R&R | YES | CONFLICTS 2 COLUMNS (NW, SW CORNERS OF INT) |
| 169 | AT | ARBOR VITAE ST / S PRAIRIE AVE | E/W | PERP | 8" WATER LINE | UNK | 69+20 | - | COI | PIP | NO | PARLL ALONG N EDGE OF ARBOR VITAE, JOINS WESTERN WATER MAIN LINE AT PRAIRIE |
| 170 | AT/S | ARBOR VITAE ST / S PRAIRIE AVE | N/S | PARLL | 36" STROM DRAIN | TBD | 69+22 | 82+00 | LACFD | PIP | NO | RUNS ALONG S PRAIRIE AVE, XING UNDER HARDY ST BRIDGE |
| 171 | AT | ARBOR VITAE ST / S PRAIRIE AVE | E/W | PERP | 2" GAS LINE | UNK | 69+22 | - | SCG | PIP | NO | ALONG N EDGE ARBOR VITAE ST |
| 172 | AT | ARBOR VITAE ST / S PRAIRIE AVE | E/W | PERP | UG ELECTRIC LINE | TBD | 69+24 | - | SCE | PIP | NO | |
| 173 | AT | ARBOR VITAE ST / S PRAIRIE AVE | E/W | PERP | 6" WATER LINE | UNK | 69+27 | - | COI | PIP | NO | PARLL ALONG N EDGE OF ARBOR VITAE, JOINS WESTERN WATER MAIN LINE AT PRAIRIE. PREV. MARKED WBM |
| 174 | AT | ARBOR VITAE ST / S PRAIRIE AVE | E/W | PERP | 10" WATER LINE | TBD | 69+53 | - | COI | PIP | NO | |
| 175 | AT | ARBOR VITAE ST / S PRAIRIE AVE | E/W | PERP | 15" SEWER LINE | 2.5 | 69+37 | 69+52 | LACSD-5 | PIP | NO | CROSSES S PRAIRIE AVE |
| 176 | S | ARBOR VITAE ST / S PRAIRIE AVE | N/S | PARLL | WATER MAIN LINE (8 | TBD | 69+50 | 81+25 | | PIP | NO | WESTERN WATER MAIN LINE CUTS W OF PRAIRIE |
| 177 | S | ARBOR VITAE ST / S PRAIRIE AVE | N/S | PARLL | WATER MAIN LINE | TBD | 69+50 | 82+00 | WBM | PIP | NO | 2ND WEST BEG @ INTERSECTION & RUNNING S ALONG PRAIRIE |
| 178 | S | ARBOR VITAE ST / S PRAIRIE AVE | N/S | PARLL | 3" GAS LINE | TBD | 69+70 | 71+23 | SCG | PIP | NO | |
| 179 | S | ARBOR VITAE ST / S PRAIRIE AVE | N/S | PARLL | WATER LINE | TBD | 69+95 | - | WBM | PIP | NO | E OF ROADWAY CONNECTED TO MIXC-UTLY ARBOR VITAE LINE TO N |
| 180 | S | ARBOR VITAE ST / S PRAIRIE AVE | E/W | PERP | WATER LINE | TBD | 69+95 | - | | PIP | NO | XING ROADWAY E/W |
| 181 | S | ARBOR VITAE ST / S PRAIRIE AVE | N/S | PARLL | 8" WATER LINE | UNK | 70+00 | 82++ | COI | R&R | YES | CONFLICTS W/ 7 COLUMNS FROM STA. 74+50 TO 82+00 |
| 182 | S | ARBOR VITAE ST / S PRAIRIE AVE | N/S | PARLL | 8" SEWER LINE | UNK | 70+50 | 82++ | COI | R&R | YES | CONFLICTS W/ 5 COLUMNS DOWN S PRAIRIE AVE UNTIL STA. 75+00 |
| 183 | S | ARBOR VITAE ST / S PRAIRIE AVE | N/S | DIAG | ELECTRIC LINE | TBD | 72+47 | 73+30 | TBD | R&R | YES | BRANCH OFF FROM MAIN DOWN C/L |
| 184 | S | ARBOR VITAE ST / S PRAIRIE AVE | E/W | PERP | WATER LINE | TBD | 72+68 | - | TBD | PIP/R | MYB | XING ALL 4 PARLL WATER MAIN LINES (2ND E LINE ENDED) |
| 185 | AT | E VICTORY ST / S PRAIRIE AVE | N/S | DIAG | 4x ELECTRIC LINE (clu | TBD | 73+78 | 74+70 | TBD | PIP | NO | BRANCH OFF FROM MAIN DOWN C/L |
| 186 | AT | ARBOR VITAE ST / S PRAIRIE AVE | E/W | PERP | WATER LINE | TBD | 74+40 | - | TBD | PIP | NO | XING ROADWAY CONNECTING E/CL & W WATER MAIN LINES |
| 187 | S | E VICTORY ST / S PRAIRIE AVE | N/S-E/W | PARLL/ PERP | WATER LINE (U) | TBD | 74+50 | 75+36 | WBM | PIP | NO | U-SHAPE IN E/W DIRECTION, XING ROADWAY |
| 188 | S | E VICTORY ST / S PRAIRIE AVE | E/W | PERP | GAS LATERAL | TBD | 74+50 | - | SCG | PIP | NO | |
| 189 | S | E VICTORY ST / S PRAIRIE AVE | E/W | PERP | GAS LATERAL | TBD | 76+24 | - | SCG | PIP | NO | |
| 190 | S | E VICTORY ST / S PRAIRIE AVE | E/W | PERP | WATER LATERAL | TBD | 78+72 | - | TBD | R&R | YES | PREV. MARKED WBM |
| 191 | S | E VICTORY ST / S PRAIRIE AVE | E/W | PERP | 3X WATER LATERALS | TBD | 79+50 | 79+53 | TBD | R&R | YES | |
| 192 | W | S PRAIRIE AVE / E HARDY ST | N/S | PARLL | 4" GAS LINE | TBD | 80+80 | 81+72 | SCG | R&R | YES | OVERLAPS XIN GAS LINE |
| 193 | N | E HARDY ST / S PRAIRIE AVE | N/S-E/W | PERP | 2X 24" SD LATERALS | TBD | 81+ | 82+ | LACFD | PIP | NO | V SHAP CONNECTED TO 36" SD MAIN LINE |
| 194 | AT | S PRAIRIE AVE / E HARDY ST (97TH) | N/S-E/W | PERP | 10" WATER LINE | UNK | 82+00 | 82+36 | WBM | PIP | NO | CONNECTED TO W WATER MAIN LINE, SPLITS AND CONTINUES E ALONG N EDGE OF 97TH ST |
| 195 | N | E HARDY ST / S PRAIRIE AVE | E/W | PERP | 2X UG ELECTRIC LINE | TBD | 82+00 | 82++ | SCE | R&R | YES | CONFLICTS WITH LAST COLUMN @ NW CORNER OF INT. |
| 196 | N | E HARDY ST / S PRAIRIE AVE | E/W | PERP | ELECTRIC SIGNAL LINE | TBD | 82+00 | - | TBD | R&R | YES | |

| No. | Location ¹ | Intersection | Orient. | Dirac. ² | Description | Depth ³ | Station Limits | Owner | Dispos. | Conflict ⁴ | Comments | |
|---|-----------------------|----------------------------|---------|---------------------|-----------------|--------------------|----------------|-------|---------|-----------------------|----------|--|
| 197 | AT | E HARDY ST / S PRAIRIE AVE | E/W | PERP | 4" GAS LINE | UNK | 82++ | - | SCG | PIP | NO | CROSSES S PRAIRIE ST CONT. ALONG HARDY ST, CONFLICTS WITH BRIDGE/STAIR |
| THESE NEED ADDITIONAL REVIEW- MAY BE MISSING FROM THE MODEL. DIFFICULT TO COMPARE DUE TO CHANGING INFORMATION | | | | | | | | | | | | |
| 198 | E | S PRAIRIE AVE / E HARDY ST | | PARLL | 39" STORM DRAIN | | | | LACSD-5 | | | RUNS ALONG S PRAIRIE ST |
| <p>¹ Conflicts marked as N/S/E/W/AT, indicating conflict is either "North of", "South of", "East of", "West of", or "At" the intersection listed in the next cell.</p> <p>² Utility orientation with respect to the track guideway or station.</p> <p>³ Depth in feet. "UNK" indicates utilities which have BaseMap callouts but no specified depth. "TBD" indicates utilities with no call out (via MarkThomas Survey).</p> <p>⁴ Conflicts marked 'YES' indicate utilities which impact columns. Utilities marked "NO" are located under the guideway. "MYB" indicates utilities which are in close proximity and may be in conflict with columns or stations.</p> | | | | | | | | | | | | |

C. MISCELLANEOUS NOTES

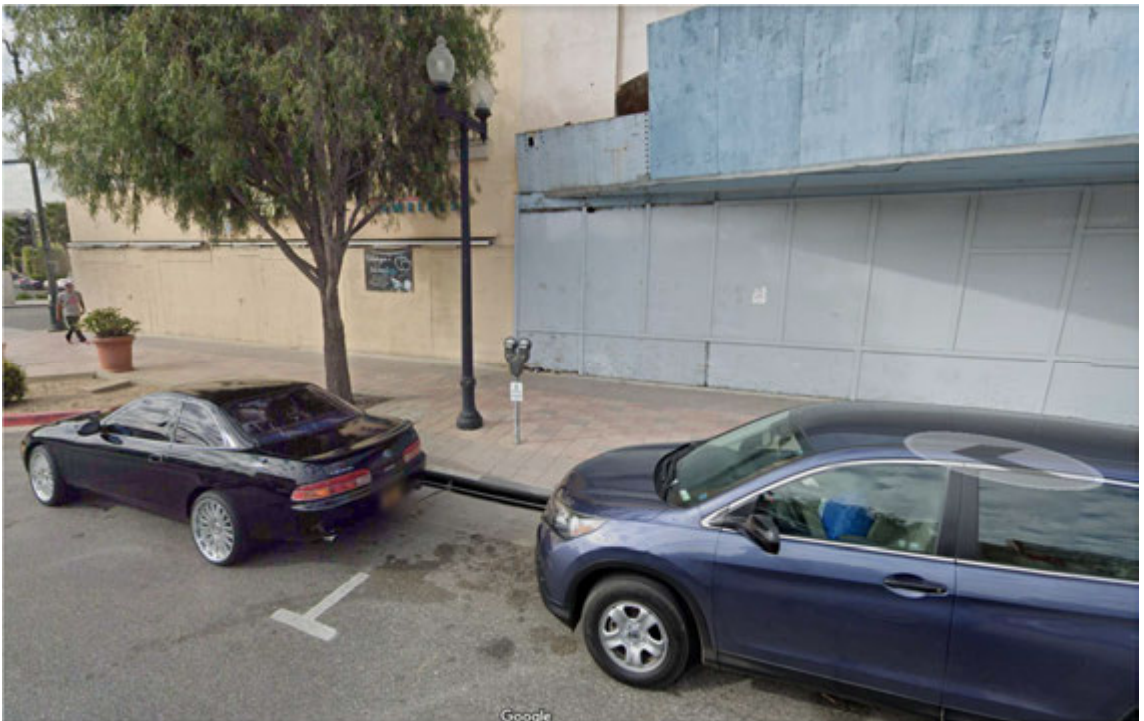
Picture of possible SD conflicts at Market and Manchester. They are labeled as LA County Catch Basins.



Storm drain on Manchester



Storm drain on Market St





Q.2

Utility Impact Data



| Address | Use Type | Size (SF) | Unit/1,000 | W Rate | W GPD | W MGD | W AFY | |
|------------------------|-----------------|-----------|------------|--------|--------------|-----------------|--------------|--------------|
| 310 E. Florence Ave | Restaurant | 1,200 | 1.200 | | 1,200 | 1,440.0 | 0.001 | 1.61 |
| 300 E. Florence Ave | Restaurant | 4,762 | 4.762 | | 1,200 | 5,714.4 | 0.006 | 6.40 |
| 254 N. Market St | Restaurant | 4,608 | 4.608 | | 1,200 | 5,529.6 | 0.006 | 6.19 |
| 250 N. Market St | Auto Service | 44,000 | 44.000 | | 120 | 5,280.0 | 0.005 | 5.91 |
| 240 N. Market St | Shopping Center | 12,300 | 12.300 | | 390 | 4,797.0 | 0.005 | 5.37 |
| 230 N. Market St | Store | 22,194 | 22.194 | | 120 | 2,663.3 | 0.003 | 2.98 |
| 224 N. Market St | Store | 5,000 | 5.000 | | 120 | 600.0 | 0.001 | 0.67 |
| 222 N. Market St | Shopping Center | 25,500 | 25.500 | | 390 | 9,945.0 | 0.010 | 11.14 |
| 210 N. Market St | Shopping Center | 7,348 | 7.348 | | 390 | 2,865.7 | 0.003 | 3.21 |
| 500 E. Manchester Blvd | Supermarket | 76,402 | 76.402 | | 180 | 13,752.4 | 0.014 | 15.40 |
| 510 E. Manchester Blvd | Gas Station | 202 | 0.202 | | 120 | 24.2 | 0.000 | 0.03 |
| 150 S. Market St | Store | 16,575 | 16.575 | | 120 | 1,989.0 | 0.002 | 2.23 |
| | | | | | TOTAL | 54,600.6 | 0.055 | 61.16 |

Revised

| | | | | | | | | |
|--------------------------|-----------------|---------|--|--------------|-----|-----------------|--------------|--------------|
| 401 South Prairie Avenue | Office | 28,029 | | 28.029 | 240 | 6,727.0 | 0.007 | 7.54 |
| 923 South Prairie Ave | Store | 9,744 | | 9.744 | 120 | 1,169.28 | 0.001 | 1.31 |
| 945 South Prairie Ave | Office | 8,357 | | 8.357 | 240 | 2,005.68 | 0.002 | 2.25 |
| 1003 South Prairie Ave | Office | 5,522 | | 5.522 | 240 | 1,325.28 | 0.001 | 1.48 |
| 1011 South Prairie Ave | Commercial | 1,098 | | 1 | 240 | 263.52 | 0.000 | 0.30 |
| 1035 South Prairie Ave | Shopping Center | 30,182 | | 30.182 | 390 | 11,770.98 | 0.012 | 13.19 |
| Total | | 54,903 | | Total | | 77,862.3 | 0.078 | 87.22 |
| Overall SF Total | | 303,023 | | | | 6,280 | 0.006 | 7.03 |

Proposed Project Water Demand

| Proposed Project Water Der Square Footage | Demand Factc GPD | AFY | | |
|---|------------------|------|-----------|--------------------|
| Stations | 27,600 | 0.05 | 1380 | 1.5457932 |
| MSF | 75000 | 0.05 | 3750 | 4.200525 |
| Train Wash | | | 230 | 0.2576322 |
| Vons Replacement Store | 46,400 | 0.18 | 8,352 | 9.35540928 |
| Total Daily Demand | | | 13712 | 15.35935968 |
| Total Annual Demand | | | 5,004,880 | |

Difference: 71.86

| Address | Use Type | Size (SF) | Unit (1,000 sf) | WW Rate | WW GPD | WW MGD | WW AFY |
|------------------------|-----------------|-----------|-----------------|--------------|-----------------|--------------|--------------|
| 310 E. Florence Ave | Restaurant | 1,200 | 1.200 | 1,000 | 1,200.0 | 0.001 | 1.34 |
| 300 E. Florence Ave | Restaurant | 4,762 | 4.762 | 1,000 | 4,762.0 | 0.005 | 5.33 |
| 254 N. Market St | Restaurant | 4,608 | 4.608 | 1,000 | 4,608.0 | 0.005 | 5.16 |
| 250 N. Market St | Auto Service | 44,000 | 44.000 | 100 | 4,400.0 | 0.004 | 4.93 |
| 240 N. Market St | Shopping Center | 12,300 | 12.300 | 325 | 3,997.5 | 0.004 | 4.48 |
| 230 N. Market St | Store | 22,194 | 22.194 | 100 | 2,219.4 | 0.002 | 2.49 |
| 224 N. Market St | Store | 5,000 | 5.000 | 100 | 500.0 | 0.001 | 0.56 |
| 222 N. Market St | Shopping Center | 25,500 | 25.500 | 325 | 8,287.5 | 0.008 | 9.28 |
| 210 N. Market St | Shopping Center | 7,348 | 7.348 | 325 | 2,388.1 | 0.002 | 2.68 |
| 500 E. Manchester Blvd | Supermarket | 76,402 | 76.402 | 150 | 11,460.3 | 0.011 | 12.84 |
| 510 E. Manchester Blvd | Gas Station | 202 | 0.202 | 100 | 20.2 | 0.000 | 0.02 |
| 150 S. Market St | Store | 16,575 | 16.575 | 100 | 1,657.5 | 0.002 | 1.86 |
| | | | | TOTAL | 45,500.5 | 0.046 | 50.97 |

Revised

| | | | | | | | |
|--------------------------|-----------------|---------|--------|--------------|-----------------|--------------|--------------|
| 401 South Prairie Avenue | Office | 28,029 | 28.029 | 200 | 5,605.8 | 0.006 | 6.28 |
| 923 South Prairie Ave | Store | 9,744 | 9.744 | 100 | 974.4 | 0.001 | 1.09 |
| 945 South Prairie Ave | Office | 8,357 | 8.357 | 200 | 1,671.4 | 0.002 | 1.87 |
| 1003 South Prairie Ave | Office | 5,522 | 5.522 | 200 | 1,104.4 | 0.001 | 1.24 |
| 1011 South Prairie Ave | Commercial | 1,098 | 1 | 200 | 219.6 | 0.000 | 0.25 |
| 1035 South Prairie Ave | Shopping Center | 30,182 | 30.182 | 325 | 9,809.2 | 0.010 | 10.99 |
| | | 303,023 | | Total | 64,885.3 | 0.065 | 72.68 |

| | | | | | | | |
|------------------------|------------------------|--------|--------|-----|---------|-------|------|
| 500 E. Manchester Blvd | Vons Replacement Store | 46,400 | 46.400 | 150 | 6,960.0 | 0.007 | 7.80 |
|------------------------|------------------------|--------|--------|-----|---------|-------|------|

| Address | Use Type | Size (SF) | Unit | Rate | lbs | tons | tons/year |
|------------------------|-----------------|-----------|---------|--------------|--------------|--------------|---------------|
| 310 E. Florence Ave | Restaurant | 1,200 | 12.000 | 0.5 | 6.0 | 0.003 | 1.10 |
| 300 E. Florence Ave | Restaurant | 4,762 | 47.620 | 0.5 | 23.8 | 0.012 | 4.35 |
| 254 N. Market St | Restaurant | 4,608 | 46.080 | 0.5 | 23.0 | 0.012 | 4.20 |
| 250 N. Market St | Auto Service | 44,000 | 440.000 | 0.9 | 396.0 | 0.198 | 72.27 |
| 240 N. Market St | Shopping Center | 12,300 | 123.000 | 2.5 | 307.5 | 0.154 | 56.12 |
| 230 N. Market St | Store | 22,194 | 221.940 | 3.12 | 692.5 | 0.346 | 126.37 |
| 224 N. Market St | Store | 5,000 | 50.000 | 3.12 | 156.0 | 0.078 | 28.47 |
| 222 N. Market St | Shopping Center | 25,500 | 255.000 | 2.5 | 637.5 | 0.319 | 116.34 |
| 210 N. Market St | Shopping Center | 7,348 | 73.480 | 2.5 | 183.7 | 0.092 | 33.53 |
| 500 E. Manchester Blvd | Supermarket | 76,402 | 764.020 | 3.12 | 2,383.7 | 1.192 | 435.03 |
| 510 E. Manchester Blvd | Gas Station | 202 | 2.020 | 0.9 | 1.8 | 0.001 | 0.33 |
| 150 S. Market St | Store | 16,575 | 165.750 | 3.12 | 517.1 | 0.259 | 94.38 |
| | | | | TOTAL | 5,329 | 2.664 | 972.49 |

Revised

| | | | | | | | |
|--------------------------|-----------------|----------------|--------|--------------|----------------|--------------|---------------|
| 401 South Prairie Avenue | Office | 28,029 | 28.029 | 0.6 | 17 | 0.008 | 3.07 |
| 923 South Prairie Ave | Store | 9,744 | 9.744 | 3.12 | 30.40 | 0.015 | 5.55 |
| 945 South Prairie Ave | Office | 8,357 | 8.357 | 0.6 | 5.01 | 0.003 | 0.92 |
| 1003 South Prairie Ave | Office | 5,522 | 5.522 | 0.6 | 3.31 | 0.002 | 0.60 |
| 1011 South Prairie Ave | Commercial | 1,098 | 1 | 0.6 | 0.66 | 0.000 | 0.12 |
| 1035 South Prairie Ave | Shopping Center | 30,182 | 30.182 | 2.5 | 75.46 | 0.038 | 13.77 |
| | | 303,023 | | Total | 5,460.4 | 2.730 | 996.52 |

| | | | | | | | |
|------------------------|------------------------|--------|---------|------|---------|-------|--------|
| 500 E. Manchester Blvd | Vons Replacement Store | 46,400 | 464.000 | 3.12 | 1,447.7 | 0.724 | 264.20 |
|------------------------|------------------------|--------|---------|------|---------|-------|--------|